

Charged-Current Inclusive Neutrino Cross Sections in the SuperScaling Model

**M.V. Ivanov¹, G.D. Megias², R. González-Jiménez³, O. Moreno⁴,
M.B. Barbaro⁵, J.A. Caballero², T.W. Donnelly⁴**

¹Institute for Nuclear Research and Nuclear Energy, Bulgarian Academy of Sciences, Sofia 1784, Bulgaria

²Departamento de Física Atómica, Molecular y Nuclear, Universidad de Sevilla, 41080 Sevilla, Spain

³Department of Physics and Astronomy, Ghent University, Proeftuinstraat 86, B-9000 Gent, Belgium

⁴Center for Theoretical Physics, Laboratory for Nuclear Science and Department of Physics, Massachusetts Institute of Technology, Cambridge, USA

⁵Dipartimento di Fisica, Università di Torino and INFN, Sezione di Torino, Via P. Giuria 1, 10125 Torino, Italy

Abstract. Charged current inclusive neutrino-nucleus cross sections are evaluated using the superscaling model for quasielastic scattering and its extension to the pion production region. The contribution of two-particle-two-hole vector meson-exchange current excitations is also considered within a fully relativistic model tested against electron scattering data. The results are compared with the inclusive neutrino-nucleus data from the T2K experiment. For experiments where $\langle E_\nu \rangle \sim 0.8$ GeV, the three mechanisms considered in this work provide good agreement with the data. However, when the neutrino energy is larger, effects from beyond the Δ also appear to be playing a role. The results show that processes induced by two-body currents play a minor role at the kinematics considered.

1 Introduction

The analysis of neutrino oscillations is at present one of the main research topics in Physics. This explains the huge activity in the field and the numerous experiments that have been proposed in several facilities and covering a very wide range in energy. For the first time, experimental data on neutrino interactions are being measured with a high statistics and small error bands. As a consequence, a great variety of studies on the theoretical side have also appeared trying to describe the data. These include analyses from low-to-intermediate energies where the nuclear effects may play an important role, to very high energies where the nucleonic and/or subnucleonic degrees of freedom are the principal ingredients.

In most neutrino experiments, the interactions of the neutrinos occur with nucleons bound in nuclei. New measurements of inclusive charged current (CC) neutrino-nucleus scattering cross sections, where only the outgoing lepton is

detected, have been recently performed by the T2K collaboration [1, 2]. For neutrino energies around 1 GeV (T2K) the main contributions to the cross sections are associated with quasielastic (QE) scattering and one pion (1π) production. These, along with the two-particle-two-hole (2p2h) meson-exchange current (MEC) contributions, are the only processes we shall consider in this work, while at higher neutrino energies multiple pion and kaon production, excitation of resonances other than the Δ and deep inelastic channels should also be considered.

The QE muon neutrino and antineutrino cross sections measured by the MiniBooNE experiment [3], where QE events are characterized by the absence of pions in the final state, have triggered a lot of theoretical work trying to explain the unexpectedly large results, in apparent tension with the higher-energy data from the NOMAD experiment [4]. Several calculations [5–8] have demonstrated that 2p2h excitations induced by two-body meson-exchange currents (MEC) play a significant role in the interpretation of the QE MiniBooNE data and in the neutrino energy reconstruction, which is therefore model dependent. At a quantitative level, however, these calculations, relying on different models and approximations (see [9] for a brief review of the various approaches), give quite different results. Furthermore, a model using Relativistic Green’s Functions (RGF), which does not explicitly contain two-body currents but to some extent includes inelastic channels through a complex optical potential, has been shown to be able to explain the QE MiniBooNE data [10]; however, these results depend significantly on the particular choice of the relativistic optical potential.

Here we evaluate the CC neutrino inclusive cross sections within the SuperScaling approach (SuSA), introduced in [11] to describe neutrino-nucleus scattering by using electron scattering data instead of relying on specific nuclear models. This approach allows one to describe the QE and Δ resonance regions in a unified framework and can be applied to high energies due to its relativistic nature. In the QE region, the SuSA model has recently been improved in [12] to incorporate effects arising in the Relativistic Mean Field (RMF) model in the longitudinal and transverse nuclear responses, as well as in the isovector and isoscalar channels. Since MEC are known to violate superscaling, their contribution must be added to the superscaling result: this will be accomplished by using a parametrization [13] of the relativistic calculation of [14].

2 The SuperScaling Model

The SuperScaling model, based on the superscaling properties of inclusive electron scattering [15, 16], has been extensively used [17] to predict neutrino and antineutrino cross sections for complex nuclei. The detailed description of the model can be found, *e.g.*, in [11, 12]. Here we simply recall its main features. In the quasielastic peak (QEP) region the basic ingredient of the model is a phenomenological superscaling function, $f_L^{QE} = k_F \cdot (R_L^{QE}/G_L^{QE})$, extracted from the world electromagnetic (e, e') data by dividing the *longitudinal* response

R_L^{QE} times the Fermi momentum k_F by the single-nucleon elementary function G_L^{QE} . The data show that f_L^{QE} is to a large extent a function of only one variable, the scaling variable ψ'_{QE} , and is independent of the momentum transfer q (scaling of first kind) and of the nucleus, represented by the Fermi momentum k_F (scaling of second kind).

The function f_L^{QE} embeds most of the nuclear effects, both in the initial and in the final state, and can therefore be used to predict the weak charged current quasielastic (CCQE) (ν_l, l) cross section. In its original version the SuSA model assumes that the superscaling function f^{QE} is the same in the longitudinal (L) and transverse (T) channels, a property referred to as scaling of zeroth-kind.

The main merit of the SuSA model is the reasonable agreement, required by construction, with electron scattering data over a very wide range of kinematics and for a large variety of nuclei. Such an agreement is a crucial test for any nuclear model to be applied to neutrino reactions. Although phenomenological, the model has firm microscopic foundations in the RMF model, which is able to reproduce both the height and the asymmetric shape of the experimental superscaling function [18]. Furthermore, and importantly, the RMF model predicts a transverse superscaling function, $f_T^{QE} = k_F \cdot (R_T^{QE}/G_T^{QE})$, which is higher than the longitudinal one, a result supported by the separated L/T data analysis [15, 19] and strictly linked to the relativistic nature of the model [20]. This result has recently been used to improve the ingredients of the SuSA model by constructing a new version (SuSAv2) where $f_T^{QE} > f_L^{QE}$ [12]. Moreover in SuSAv2 the effects of Pauli blocking, initially neglected, have been implemented. In the results we present in the next section the updated version SuSAv2 of the model will be used.

In the QE region the superscaling predictions have been successfully compared with the recent MINER ν A data [21, 22], that have been shown in [12, 23] to be well reproduced without need of invoking large 2p2h contributions. Good agreement is also obtained with the high-energy NOMAD data [4]. On the contrary, the MiniBooNE QE data are underpredicted by the model. The inclusion of 2p2h MEC excitations in the vector channel, evaluated using the model of [14], gives results which are closer to the experimental points, but are not enough to explain the data [6, 24], unlike the analysis and results in [7, 25].

It should be mentioned that the model developed in [14] for electron scattering only contains the vector part of the two-body current. Assuming the transverse vector 2p2h MEC scaling function, $f_{T,VV}^{MEC}$, to be equal to the axial-axial ($f_{T,AA}^{MEC}$) and vector-axial ($f_{T,VA}^{MEC}$) ones – as considered in [5] – a final result in agreement with CCQE MiniBooNE data is found. However, such a result cannot be fully justified until a proper 2p2h MEC calculation for the axial-axial and vector-axial responses is completed. The full calculation, including the axial two-body current, is in progress [26] and once it is available it will allow us to test the quality of this approximation.

The superscaling approach has been extended from the QE domain into the region where the Δ -excitation dominates. In [11, 27] it has been shown that

the residual strength in the resonance region, obtained by subtracting the QE contribution from the total cross section, can be accounted for by introducing a new scaling function f^Δ dominated by the $N \rightarrow \Delta$ and employing a new scaling variable, ψ'_Δ , which is suited to the resonance region. In this work we revisit this approach by using the improved QE superscaling model, SuSAv2, and an updated parametrization of the 2p2h MEC response [13]. This procedure yields a good representation of the electromagnetic response in both the QE and Δ regions, as we shall illustrate in the next section.

Two different parameterizations have been considered to deal with the less-known axial form factors $C_{3,4,5}^A$ appearing in the elementary $W^+N \rightarrow \Delta^+$ transition current. One is taken from [28] where the deuteron was studied and the other was introduced in [29]. The comparison of results obtained with the two parameterizations can be viewed as a measure of the degree of uncertainty that can be expected from the choice of the single-nucleon response for this reaction. In the present analysis, our results show a negligible dependence upon the choice of parametrization. Hence all results presented in this work correspond to the model of [28]. The superscaling predictions for the Δ region have been compared in [30] with the MiniBooNE data in the case of π^+ production for the ν_μ -CH₂ CC charged pion cross section [31]. The results obtained for the flux-averaged cross sections were found to be in good agreement with the data, whereas for the totally integrated unfolded cross section a somewhat different dependence on the neutrino energy was obtained from the one displayed by the data. It is also important to stress that the present scaling approach is expected to be valid only for those kinematical situations where the Δ -resonance excitation is the dominant inelastic process. At higher energies heavier resonances can be excited and the deep inelastic scattering domain can be reached. In this case the phenomenological extension of the model developed in [32], based on direct fits to highly inelastic $e - N$ scattering data, is more suitable to describe the inclusive cross section.

As first noticed in [11] and studied in more depth in [27], sizeable deviations (10–15%) from scaling are observed in the region where the QE and Δ responses overlap. In this region effects stemming from correlations and 2p2h MEC can play an important role and they cannot be reproduced by models that assume impulsive, quasifree scattering on bound nucleons. Therefore these effects must be added to the QE and Δ scaling functions. This we do by using a parametrization [13] of the results of Ref. [14], where a fully relativistic calculation of the 2p2h MEC contribution to inclusive electron scattering was performed.

3 Results

In this section we first set up the model and test it versus electron scattering (e, e') data for the kinematics relevant for the present study. Then we apply it to the analysis of inclusive neutrino scattering and compare its predictions with the data taken by the T2K collaboration.

3.1 The Non-Quasielastic Scaling Function

In this subsection we construct a phenomenological scaling function to be used in the non-quasielastic (non-QE) region, assuming that this is dominated by the Δ -resonance. We follow an updated version of the procedure described in [27]. More specifically, we first define a non-QE experimental scaling function in this region, $f^{\text{non-QE}}$. This entails subtracting from the (e, e') double-differential cross section the SuSAv2 QE scaling predictions and the 2p2h MEC contribution given by [13]:

$$\left(\frac{d^2\sigma}{d\Omega d\omega}\right)^{\text{non-QE}} = \left(\frac{d^2\sigma}{d\Omega d\omega}\right)^{\text{exp}} - \left(\frac{d^2\sigma}{d\Omega d\omega}\right)_{1\text{p1h}}^{\text{QE, SuSAv2}} - \left(\frac{d^2\sigma}{d\Omega d\omega}\right)_{2\text{p2h}}^{\text{MEC}}. \quad (1)$$

Then we define a superscaling function in the region of the Δ peak as follows:

$$f^{\text{non-QE}}(\psi_\Delta) = k_F \frac{\left(\frac{d^2\sigma}{d\Omega d\omega}\right)^{\text{non-QE}}}{\sigma_M (v_L G_L^\Delta + v_T G_T^\Delta)}, \quad (2)$$

where ψ_Δ is the Δ scaling variable and G_L^Δ, G_T^Δ are single-hadron functions referred to the $N \rightarrow \Delta$ transition (see [27] for explicit expressions). In the above σ_M is the Mott cross section and $v_{L,T}$ are the usual kinematic factors.

Next we study the scaling behavior of $f^{\text{non-QE}}$ by analyzing a large set of high quality (e, e') data for ^{12}C , using similar procedures to those discussed in [11]. The data used there (see also [33]) were chosen to match – at least

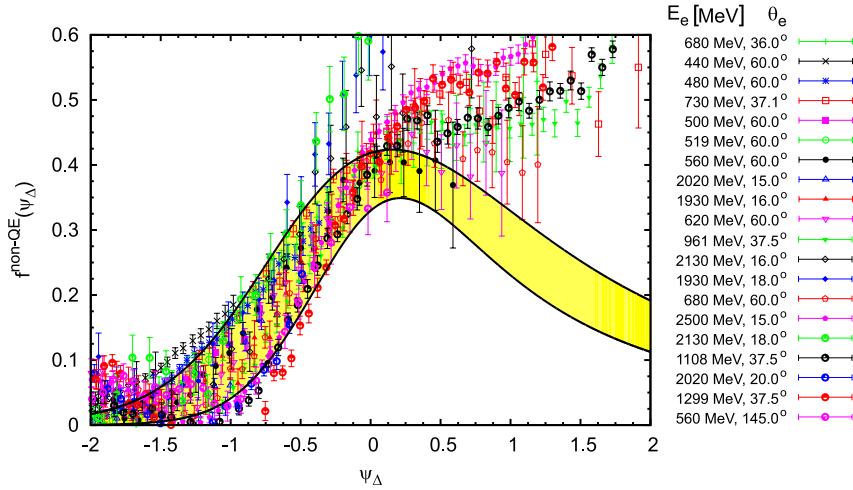


Figure 1. Averaged experimental values of $f^{\text{non-QE}}(\psi_\Delta)$ together with a phenomenological fit of the non-QE scaling function. The colored band represents an estimation of the theoretical uncertainty (see text).

roughly – the kinematics that are relevant for the neutrino data under discussion; these choices of kinematics are listed in the figure.

From this analysis, illustrated in Figure 1, it appears that scaling in the Δ region works reasonably well up to the center of the Δ peak, $\psi_{\Delta} = 0$, while it breaks, as expected, at higher energies where other inelastic processes come into play. However the quality of scaling is not as good as in the QEP region. For this reason the non-QE scaling function is represented with a band, rather than with a function, which accounts for the spread of pseudo-data seen in Figure 1. This band, together with the SuSAv2 phenomenological fits and the MEC response, can now be used to test the model against electron scattering data and to predict neutrino and antineutrino cross sections.

3.2 Test vs. Electron Scattering

In Figure 2 we compare the model predictions with inclusive electron scattering data on ^{12}C . Although many high quality electron scattering data exist, here we only show results for a few representative choices of kinematics, similar to those involved in the neutrino experiments that we address in the following sections.

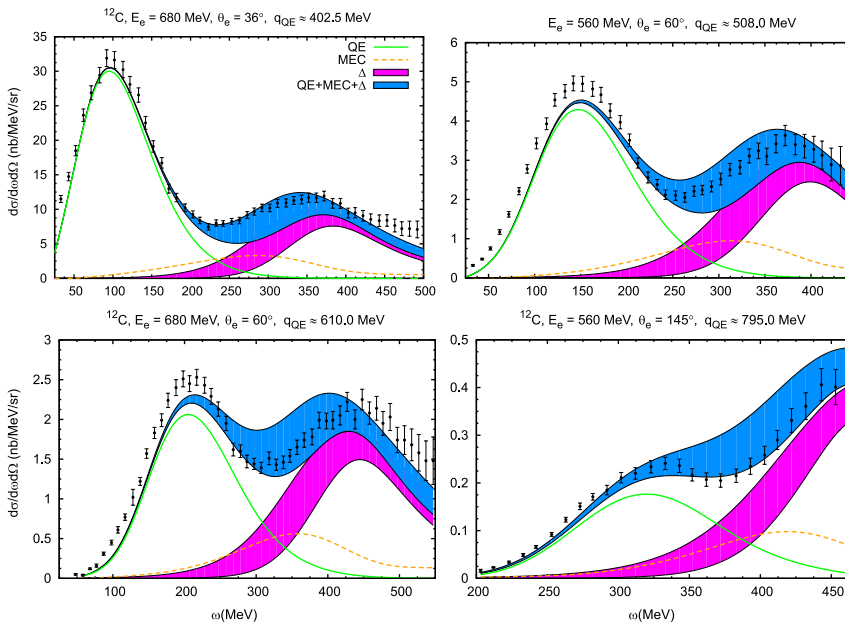


Figure 2. Double-differential inclusive electron-carbon cross sections, $d\sigma/d\omega d\Omega$. The panels are labeled according to beam energy, scattering angle, and value of q_{QE} at the quasielastic peak. The results are compared with the experimental data from [33] at the selected kinematics (see text).

As observed, the model gives a good description of the data, provided the 2p2h MEC are included. These, as expected, play a major role in filling the “dip” region between the QE and Δ peaks. The band in the final cross section (blue region) comes from the uncertainty in the determination of the Δ superscaling function. This explains that the data located in the region close to the Δ -peak are contained within the limits of the above band. More importantly, the model (with its associated uncertainty) is capable of reproducing successfully all data with particular emphasis on the dip region. This result gives us confidence in the reliability of the model and its application to the analysis of neutrino-nucleus scattering reactions.

3.3 T2K

In Figure 3 we show the CC-inclusive ν_μ - ^{12}C double-differential cross section per nucleon versus the muon momentum, p_μ , for different angular bins, folded with the T2K flux. The QE curve corresponds to the SuSAv2 model illustrated in Section 2 (see [12] for details). The resonant pion production curve (1π) is obtained with the non-QE scaling function described above. As in the previous

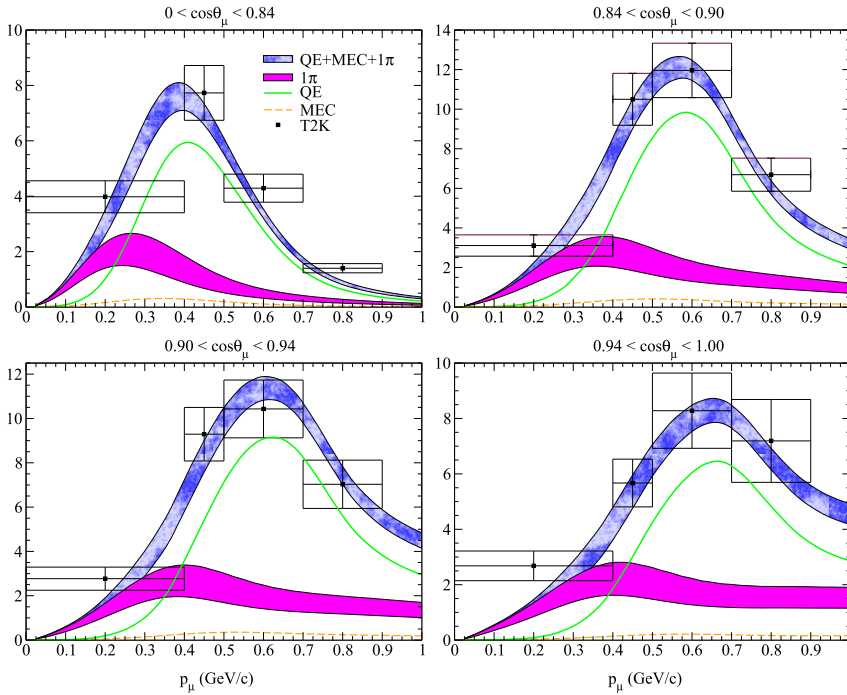


Figure 3. The CC-inclusive T2K flux-folded ν_μ - ^{12}C double-differential cross section per nucleon evaluated in the SuSAv2 model is displayed as a function of the muon momentum for different bins in the muon angle. The separate contributions of the QE, 1π and vector 2p2h MEC are displayed. The data are from [1].

case of electron scattering, the band corresponds to the theoretical uncertainty associated with the extraction of the non-QE scaling function discussed in the previous section. The MEC curve corresponds to the fully relativistic calculation of 2p2h excitations induced by pionic vector two-body current of [14] and parameterized in [13].

We observe that the model yields excellent agreement with the data. Moreover, the main contribution in the cross section comes from the QE and pion production mechanisms. On the contrary, MEC play a minor role at these kinematics, a result that is somehow different from the one found in [34]. It should be noted however that the two calculations differ in various respects: first, the present model does not include the axial two-body current, as explained in the previous section; second, the two calculations, although in principle similar, involve different approximations in the way they account for relativistic effects – the calculation of [14] being exactly relativistic – and in some important technical details in the multidimensional integration leading to the results (see [9, 35]). Indeed, the MEC contributions here are so small that, even were AA and VA contributions that are as large as these VV contributions to be included, the net effect would still not be very significant.

As shown in the analysis of the non-QE scaling function (Figure 1), scaling is not fulfilled at $\psi_\Delta \gtrsim 0 - 0.5$ due to other inelastic processes. However, contributions beyond $\psi_\Delta = 0.5$ are not very significant at the kinematics involved in the ν_μ T2K experiment [36]. Indeed, the effects in the 1π cross sections associated with this positive- ψ_Δ tail are less than 10–12%. This supports the reliability of our model to be applied to the description of T2K muon-neutrino data.

In Figure 4 we compare our predictions with recent T2K data corresponding to electron-neutrino scattering [2]. We show results for the flux-folded ν_e - ^{12}C differential cross section against the electron momentum (left panel) and QE transferred four-momentum (right panel). As observed, the model underestimates the data at high p_e and Q_{QE}^2 , in contrast with the situation observed in the pre-

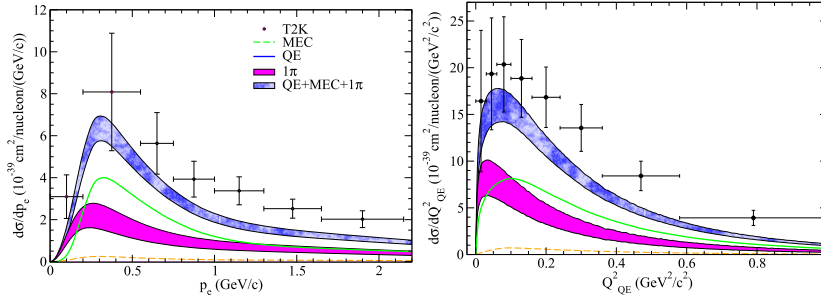


Figure 4. The CC-inclusive T2K flux-folded ν_e - ^{12}C differential cross section per nucleon evaluated in the SuSAv2 model is displayed as a function of the electron momentum (left panel) and Q_{QE}^2 (right panel). The separate contributions of the QE, 1π and vector 2p2h MEC are displayed. The data are from [2].

vious case, *i.e.*, muonic neutrinos. This clearly indicates that high-inelasticity processes, which are not incorporated in our formalism, have a significant contribution in the analysis of this experiment. Moreover, this is also consistent with the electronic neutrino flux with an average energy $\langle E_{\nu_e} \rangle \sim 1.3$ GeV, which is significantly larger than the value corresponding to the case of muonic neutrinos, $\langle E_{\nu_\mu} \rangle \sim 0.85$ GeV. This also reflects the much more important tail in the electronic neutrino flux that extends to very high neutrino energies.

4 Conclusions

We have compared the predictions of the recently revised superscaling model (SuSAv2), devised for QE scattering and extended to the Δ -resonance production region, with the available inclusive data for charged current muon (electron) neutrino- ^{12}C reactions of the T2K experiment, where the mean neutrino energy is 0.85 GeV (1.3 GeV). The model also includes 2p2h excitations induced by vector meson-exchange currents carried by the pion and has been tested against inclusive electron scattering. Moreover, the model is fully relativistic and can therefore be applied at high energies, provided the relevant physics mechanisms are taken into account.

Our main conclusions can be summarized as follows: 1) The present approach provides a very good representation of the T2K ν_μ experimental data. 2) On the contrary, the model fails in reproducing T2K ν_e data. This is a clear signal of the relevance of other reaction mechanisms (not included in the model yet) such as resonances beyond the Δ , multi-meson production and deep inelastic scattering. Work is in progress to implement these processes in the model. 3) Pionic (vector) meson-exchange currents in neutrino scattering are shown to play a minor role ($<10\%$) for all of the kinematical situations considered here. Axial-vector MEC contributions have yet to be included. 4) The uncertainty related to the poorly known axial form factors entering in the $N \rightarrow \Delta$ current does not present a significant impact ($<6\%$) at the experimental kinematics analyzed.

Acknowledgements

This work was partially supported by INFN under project MANYBODY, by Spanish DGI and FEDER funds (FIS2011-28738-C02-01, FPA2013-41267), by the Junta de Andalucia, by the Spanish Consolider-Ingenio 2000 program CPAN (CSD2007-00042), by the Campus of Excellence International (CEI) of Moncloa project (Madrid) and Andalucia Tech, by the Bulgarian National Science Fund under contracts No. DFNI-T02/19 and DFNI-E02/6 (M.V.I.), by the Office of Nuclear Physics of the U.S. Department of Energy under Grant Contract Number DE-FG02-94ER40818 (T.W.D.) and by the 7th European Community Framework Programme Marie Curie IOF ELECTROWEAK (O.M.). R.G.J. acknowledges financial help from the Interuniversity Attraction Poles Programme initiated by the Belgian Science Policy Office.

References

- [1] K. Abe et al. [T2K Collaboration], *Phys. Rev. D* **87** (2013) 092003.
- [2] K. Abe et al. [T2K Collaboration], *Phys. Rev. Lett.* **113** (2014) 241803.
- [3] A.A. Aguilar-Arevalo et al. [MiniBooNE Collaboration], *Phys. Rev. D* **81** (2010) 092005; *Phys. Rev. D* **88** (2013) 032001.
- [4] V. Lyubushkin et al. [NOMAD Collaboration], *Eur. Phys. J. C* **63** (2009) 355.
- [5] M. Martini et al., *Phys. Rev. C* **80** (2009) 065501.
- [6] J.E. Amaro et al., *Phys. Lett. B* **696** (2011) 151.
- [7] J. Nieves et al., *Phys. Lett. B* **707** (2012) 72.
- [8] O. Lalakulich et al., *Phys. Rev. C* **86** (2012) 014614.
- [9] I. Ruiz Simo et al., *Phys. Rev. D* **90** (2014) 033012.
- [10] A. Meucci, et al., *Phys. Rev. D* **85** (2012) 093002; *Phys. Rev. Lett.* **107** (2011) 172501.
- [11] J.E. Amaro et al., *Phys. Rev. C* **71** (2005) 015501.
- [12] R. González-Jiménez et al., *Phys. Rev. C* **90** (2014) 035501.
- [13] G.D. Megias et al., *Phys. Rev. D* **91** (2015) 073004.
- [14] A. De Pace et al., *Nucl. Phys. A* **726** (2003) 303.
- [15] T.W. Donnelly and I. Sick, *Phys. Rev. Lett.* **82** (1999) 3212; *Phys. Rev. C* **60** (1999) 065502.
- [16] C. Maieron, T.W. Donnelly, and I. Sick, *Phys. Rev. C* **65** (2002) 025502.
- [17] J.A. Caballero et al., *Phys. Rev. Lett.* **95** (2005) 252502; *Phys. Rev. C* **74** (2006) 015502; J.E. Amaro et al., *Phys. Rev. Lett.* **98** (2007) 242501; *Phys. Rev. C* **75** (2007) 034613; R. González-Jiménez et al., *Phys. Lett. B* **718** (2013) 1471.
- [18] J.A. Caballero et al., *Phys. Lett. B* **653** (2007) 366.
- [19] J.M. Finn et al., *Phys. Rev. C* **29** (1984) 2230.
- [20] M.V. Ivanov et al., *Phys. Lett. B* **727** (2013) 265.
- [21] G.A. Fiorentini et al. [MINER ν A collaboration], *Phys. Rev. Lett.* **111** (2013) 022502.
- [22] L. Fields et al. [MINER ν A Collaboration], *Phys. Rev. Lett.* **111** (2013) 022501.
- [23] G.D. Megias et al., *Phys. Rev. D* **89** (2014) 093002.
- [24] J.E. Amaro et al., *Phys. Rev. Lett.* **108** (2012) 152501.
- [25] M. Martini et al., *Phys. Rev. C* **84** (2011) 055502.
- [26] J.E. Amaro et al., in preparation.
- [27] C. Maieron et al., *Phys. Rev. C* **80** (2009) 035504.
- [28] L. Alvarez-Ruso et al., *Phys. Rev. C* **59** (1999) 3386.
- [29] E.A. Paschos et al., *Phys. Rev. D* **69** (2004) 014013.
- [30] M.V. Ivanov et al., *Phys. Lett. B* **711** (2012) 178.
- [31] A.A. Aguilar-Arevalo et al. (MiniBooNE Collaboration), *Phys. Rev. D* **83** (2011) 052007.
- [32] M.B. Barbaro et al., *Phys. Rev. C* **69** (2004) 035502.
- [33] O. Benhar et al., *Rev. Mod. Phys.* **80** (2008) 189.
- [34] M. Martini and M. Ericson, *Phys. Rev. C* **90** (2014) 025501.
- [35] I.R. Simo et al., *Phys. Rev. D* **90** (2014) 053010.
- [36] M.V. Ivanov et al., *J. Phys. G: Nucl. Part. Phys.* **43** (2016) 045101.